

MONTHLY MEMBERSHIP PROGRESS REPORT

LOCATION TEXAS

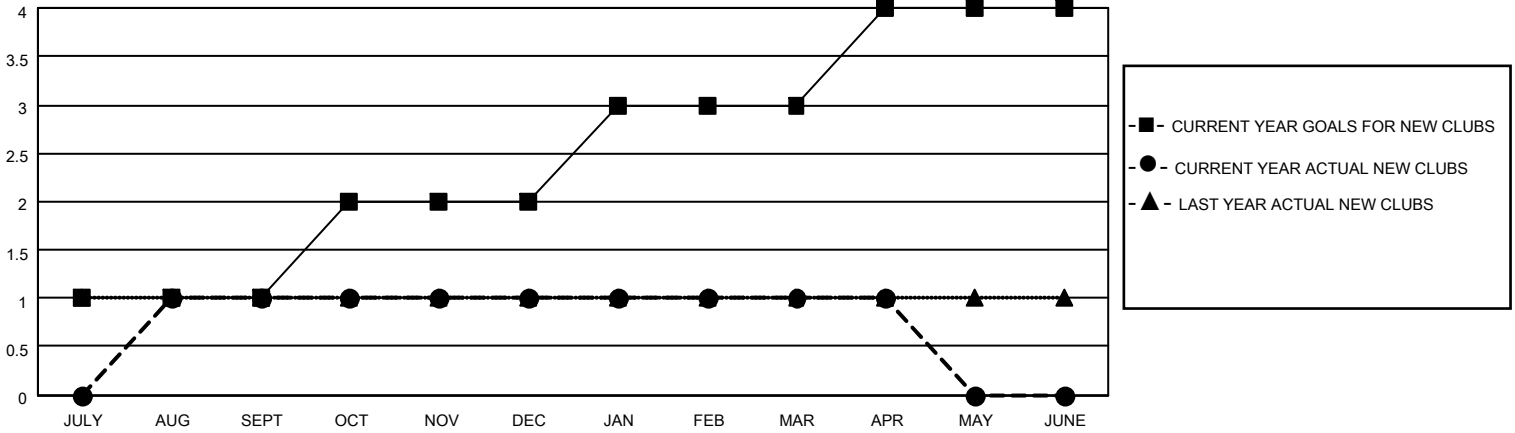
District 2 S2

Results as of: 4/30/2022

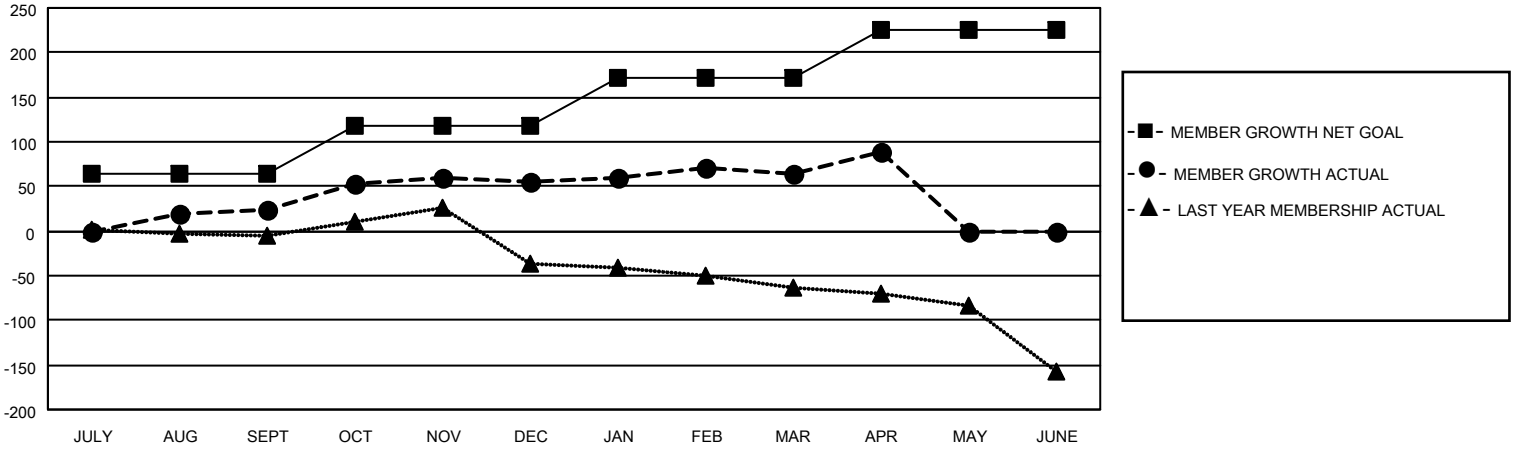
Clubs			
RESULTS FOR 2021-2022			
QUARTER	NEW CLUB GOAL	NEW CLUBS	DROPPED CLUBS
JULY/AUG/SEPT	1	1	1
OCT/NOV/DEC	1	0	0
JAN/FEB/MAR	1	0	0
APR/MAY/JUNE	1	0	0

Members			
RESULTS FOR 2021-2022			
QUARTER	MEMBER GROWTH NET GOAL	MEMBER GROWTH ACTUAL	DROPPED MEMBERS ACTUAL (including transfers)
JULY/AUG/SEPT	65	77	46
OCT/NOV/DEC	53	86	49
JAN/FEB/MAR	53	53	40
APR/MAY/JUNE	55	32	9

GOALS AND ACTUAL NEW CLUBS CUMULATIVE



GOALS AND ACTUAL MEMBERS CUMULATIVE



DROPPED CLUBS: 1

29 CLUBS OF 55 ADDED 1 OR MORE NEW MEMBERS

GENDER DISTRIBUTION

MALE	791 (52.70%)
FEMALE	709 (47.24%)
NON BINARY	1 (0.07%)
PREFER NOT TO ANSWER	0 (0.00%)

DROPPED MEMBERS

[CLICK HERE FOR CUMULATIVE MEMBERSHIP DATA](#)

DECEASED	14
CLUB CANCELLED	0
OTHER	130
TOTAL	144

TOTAL FAMILY UNIT MEMBERS 283

FAMILY MEMBERS PAYING HALF DUES 151